



ROSSLYN FARMS COMMUNITY CONNECTION PLAN (CCP)

Introduction to Long-Term Community Planning
Concepts for Our Park and Recreational Spaces

January 10, 2022

BACKGROUND & OBJECTIVES

In 2020, the Rosslyn Farms Council began exploring ideas to revitalize and improve the community / park spaces within our community. Recognizing the rich history and many assets we have, we engaged a third party to assist with thinking through a long-term, multi-phased plan for our community spaces. Our objectives were straightforward:

- **Preserve, protect and improve** park spaces, especially considering natural deterioration and use (e.g., replacing dead trees removed in park).
- **Connect community assets** such as parks and trails as much as possible to enhance sense of community.
- **Improve overall neighborhood safety** and ensure all park/recreational areas are within code.
- **Improve neighborhood environment** and attract/retain new families.



GUIDING PRINCIPLES

- Preserve and enhance existing community assets, while maintaining our rich history of community and gathering.
- Create a long-term, phased approach with annual milestones and budget.
- Improve space based on how our community uses it (e.g., the 4th of July 😊).
- Leverage as much state/grant funding as possible. We anticipate:
 - 50% in matching state funds/grants
 - 25% neighborhood funded (i.e., through annual borough budget)
 - 25% donation and other outside funding/grants (e.g., CDBGs)
- Communicate and involve the community in decision-making through the establishment of formal committee, coordinated by Council Parks Committee.



INITIAL SUCCESSES

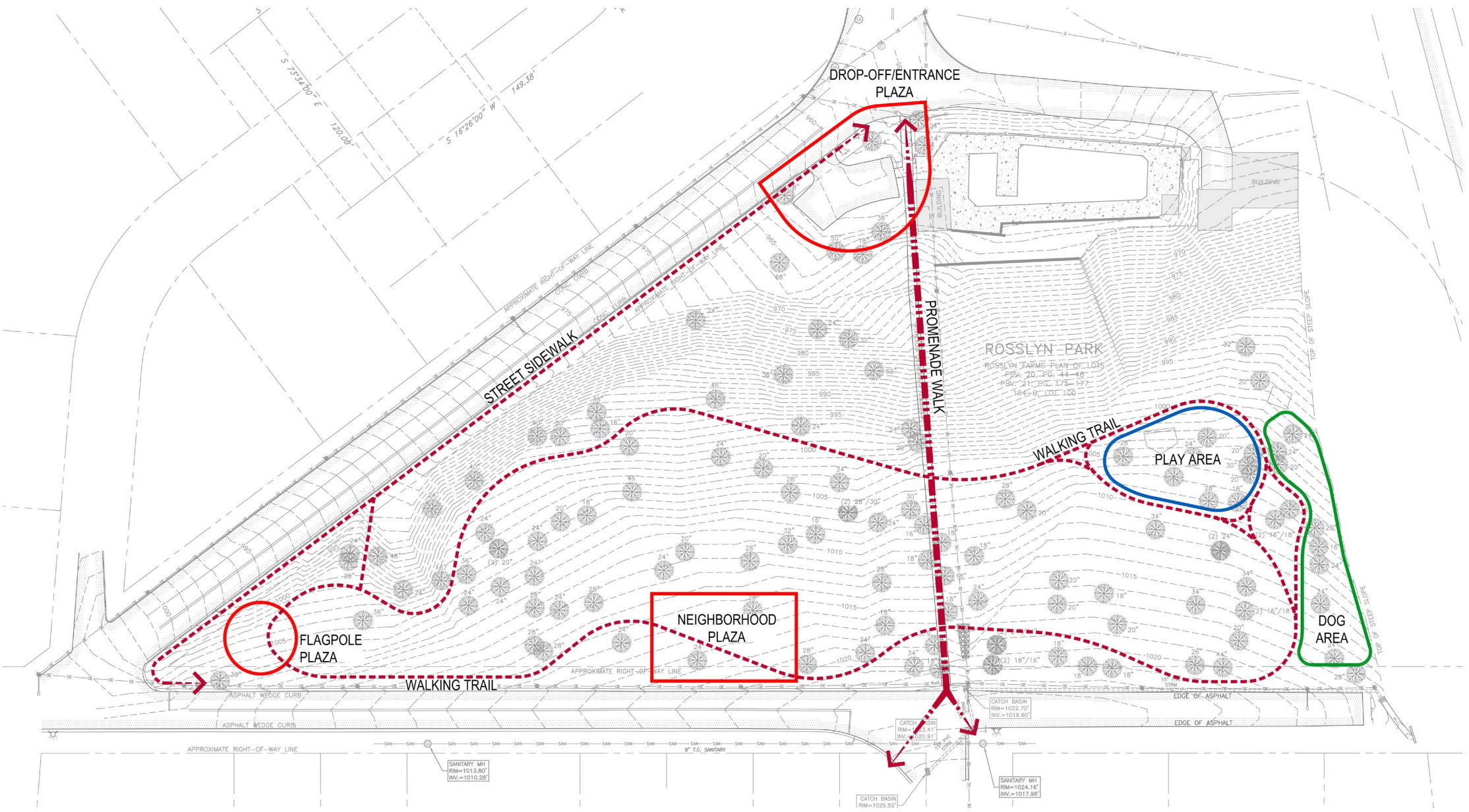
Since beginning these discussions, we have completed improvements in several park and recreational areas with the longer-term **community connection plan** in mind.



...And an additional potential connection is being considered along Kings Highway (restoring old trail on borough property).



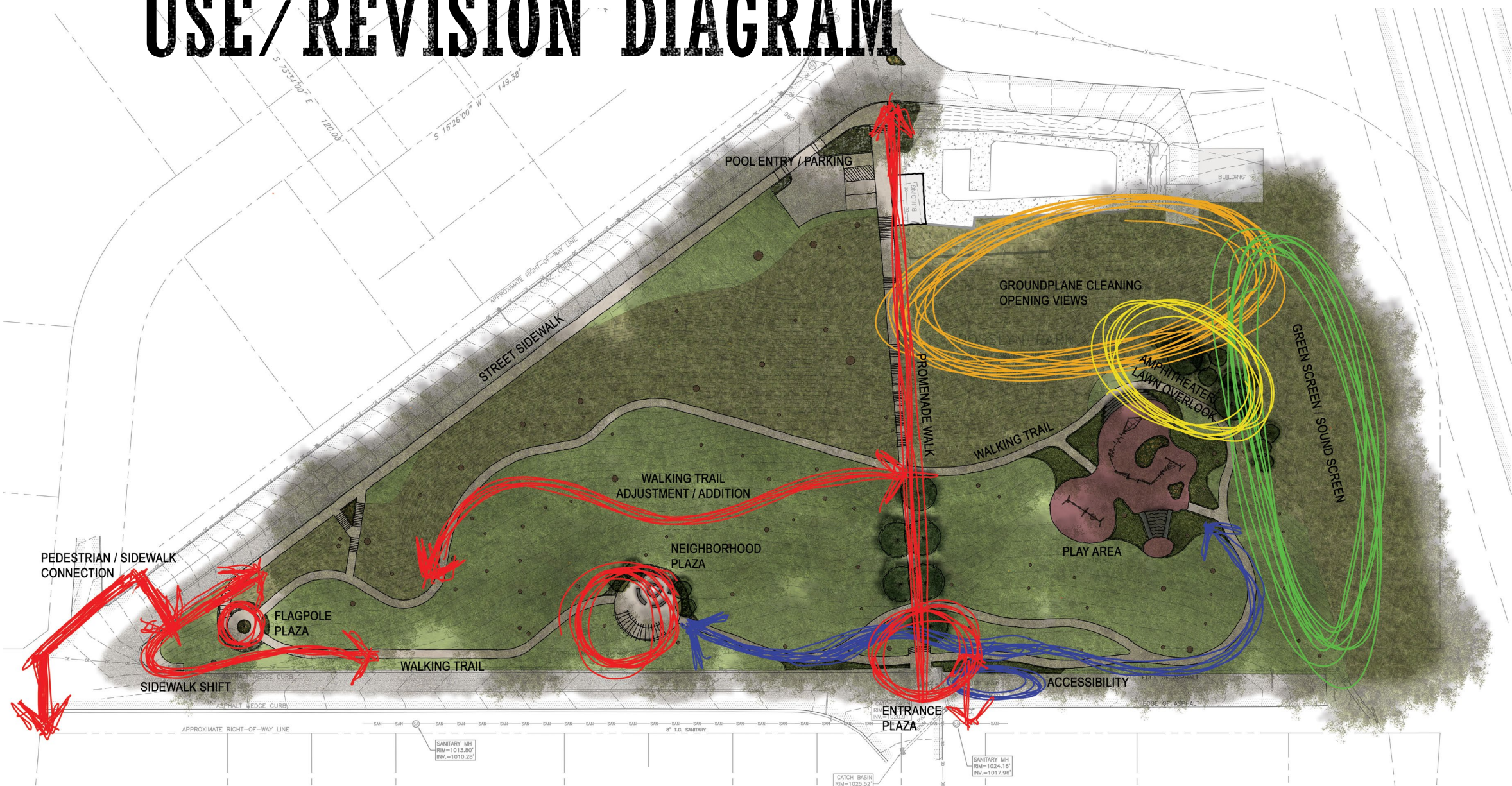
PRELIMINARY PARK USE DIAGRAM



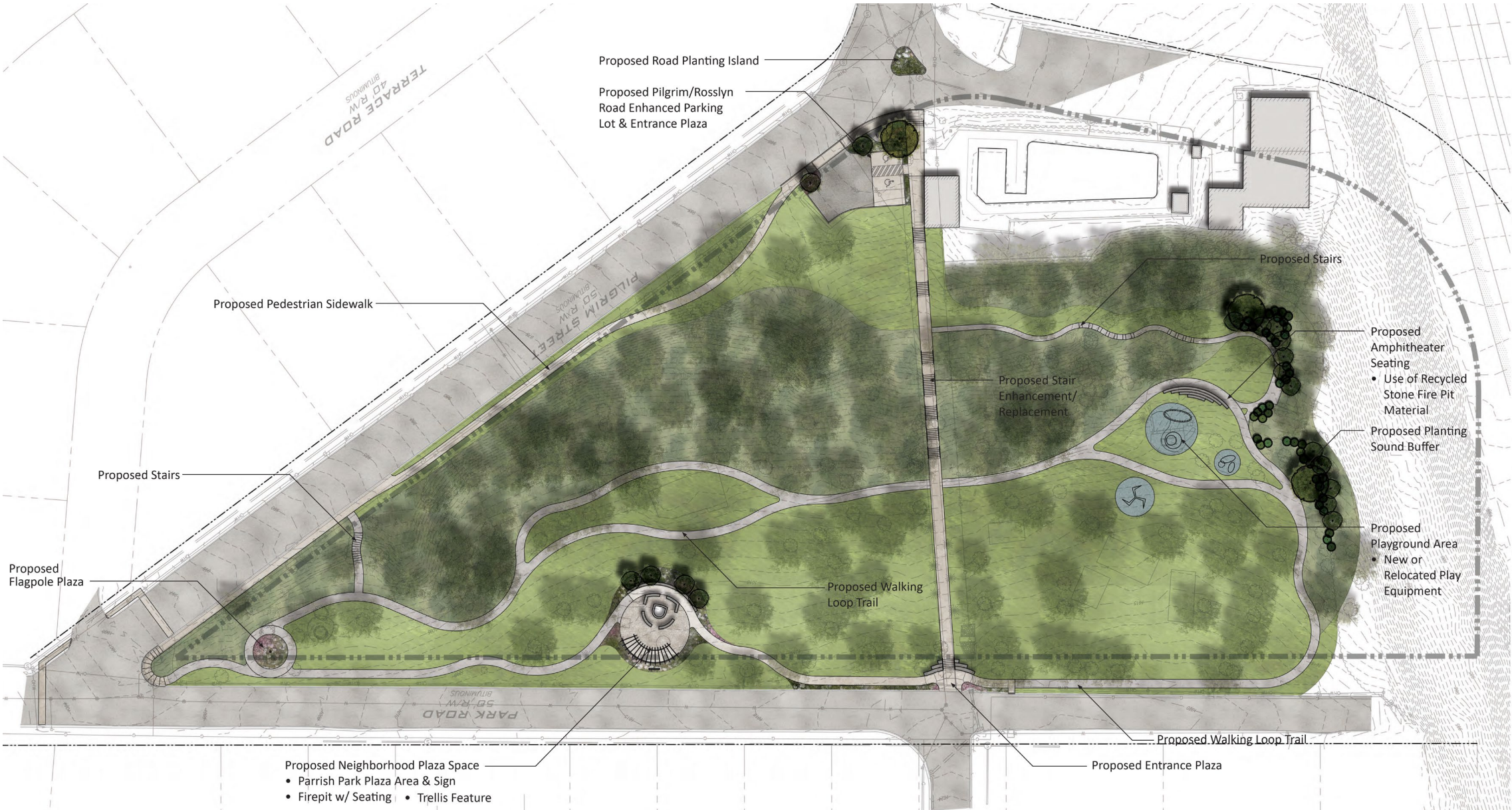
CONCEPTUAL PARK MASTER PLAN



CONCEPTUAL PARK MASTER PLAN USE/REVISION DIAGRAM



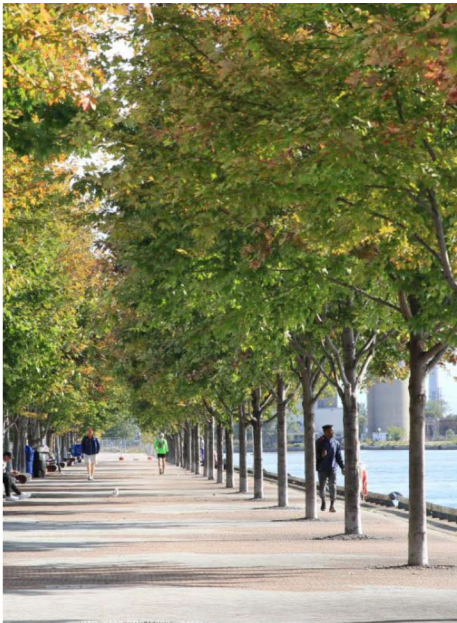
REVISED PARK MASTER PLAN



REVISED PARK MASTER PLAN – PHASING



PARK PRECEDENT IMAGES



NEXT STEPS

- Summarize community discussion for Last Word
- Establish formal “Connecting the Community” committee (community members + members of council)
- **By April:** Provide detailed recommendation for phasing and funding
 - Grant funding needs to be submitted in Spring
- **By May:** Decisions on short-term actions that can be accomplished in 2022 within current budget
- **By June/July:** Confirm final design and recommendations for phases
- Plan for Community Connection plan annually

